

Warranty

▶ To receive after service, have the following ready before you contact our branches.

1. Name of the product.
2. Model number of the product.
3. The area of problem.
4. Phone number and address at which you can be contacted.

Warranty Card

PRODUCT	
MODEL	
DATE PURCHASED	
WARRANTY PERIOD	
AGENCY ADDRESS	

▶ KOCOM Warranties the original purchaser of this product as follows.

- 1) This product is produced under strict quality control and inspection procedures.
- 2) If this product breaks down during proper use as a result of product defect, KOCOM will repair it within one year from date of purchase free of charge.
- 3) The following cases will be subject to charge, even during warranty period:
 - a. Breakdown during transport, or through careless treatment, by consumer.
 - b. Breakdown cause by unauthorized repair, or system modification.
 - c. Breakdown caused by natural disaster or power disorder.



http://www.kocom.com

E-mail : export@kocom.co.kr

This manual is based on the date as shown in the right and specifications are subject to change without notice for quality improvement

KIP-304 10.04

Interphonedio Manual

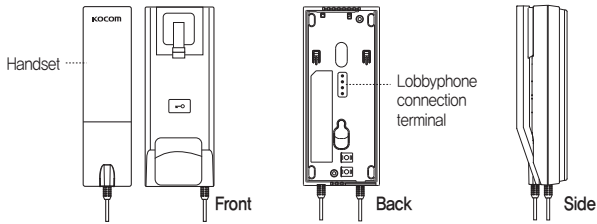
[KIP-304 User Manual]

- Can be combined with door opener.
- Easily mounted on wall, desk.



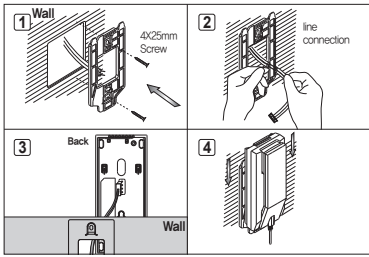
KOCOM CO.,LTD.

Name of Each Part



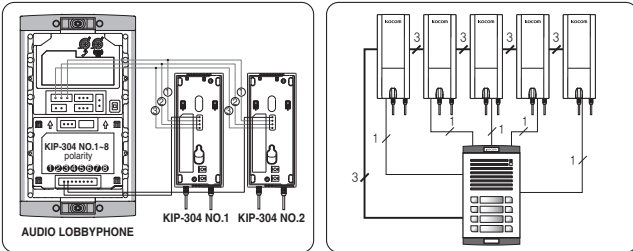
Installation

Interphone Installation



- 1) Install wall-hanger bracket on wall with attached Vis.
- 2,3) Connect wiring to interphone back terminal referring to product connection diagram.
- 4) Hang interphone on wall-hanging, and fix interphone on wall-hanger bracket using attached Vis.

Product connection diagram

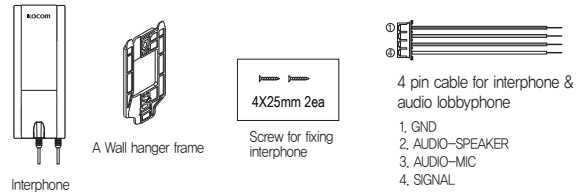


- Check the suitability of the lines for installing when you use the exiting lines.
- Do the wiring work by using the designed material.
- Connect the electric wire with the designed ways and ground.

Specifications

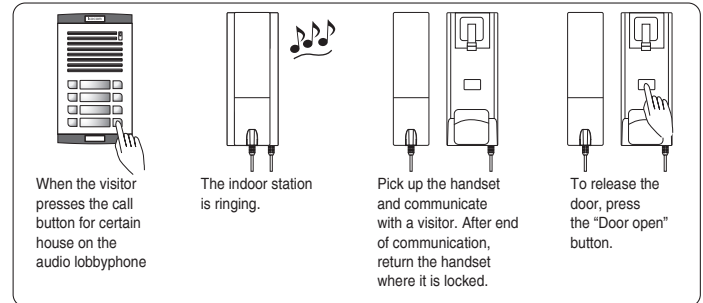
Model No.	KIP-304
Power Source	DC 12V (sourced from lobbyphone)
Power Consumption	MAX 5W
Communication System	Handset
Wiring	3+n (Polarity)
Dimension	(W)75mmX(H)176mmX(D)52mm

Components of product



Instructions for operation

Communication with Audio lobbyphone



When the visitor presses the call button for certain house on the audio lobbyphone

The indoor station is ringing.

Pick up the handset and communicate with a visitor. After end of communication, return the handset where it is locked.

To release the door, press the "Door open" button.